

Klemko Techniek B.V.
Phone: +31 (0)880023300
E-mail: info@klemko.nl

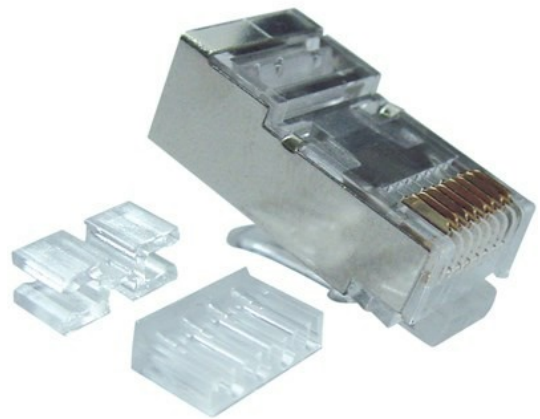
klemko®

182102 - RJ45-RM-C6A-A

RJ Connectoren

Package type: BG á 100 pce

/productimages/182102.jpg



PRODUCT SPECIFICATIONS:

Model	Plug
Type of connector	RJ45 8(8)
Screened	Yes
Category	6A (TIA)
Connection type	Crimp
Special tool necessary	No
Suitable for round cable	Yes
Suitable for flat cable	No
Suitable for solid conductors	Yes
Suitable for flexible core	Yes
Colour	Transparent
Housing material	Polycarbonate (PC)
Yes	
Yes	