

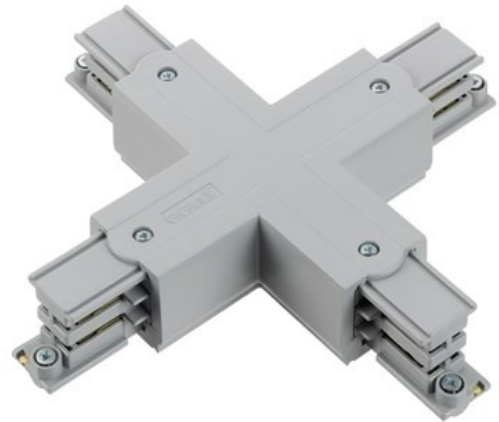
Klemko Techniek B.V.
Phone: +31 (0)880023300
E-mail: info@klemko.nl

klemko®

Euro 3 Fase Spanningsrail

Package type: CT á 1 Metre

/productimages/876320.jpg



PRODUCT SPECIFICATIONS:

Number of groups/phases	3
Nominal voltage (V)	220 - 240
Shape	Rectangular
Material	Plastic
Surface finishing	Matt
Colour	Aluminium
Length (mm)	95
Width (mm)	95
Connector	
Nominal voltage (V)	230
Housing colour	7040
Suitable for surface mounting	Yes